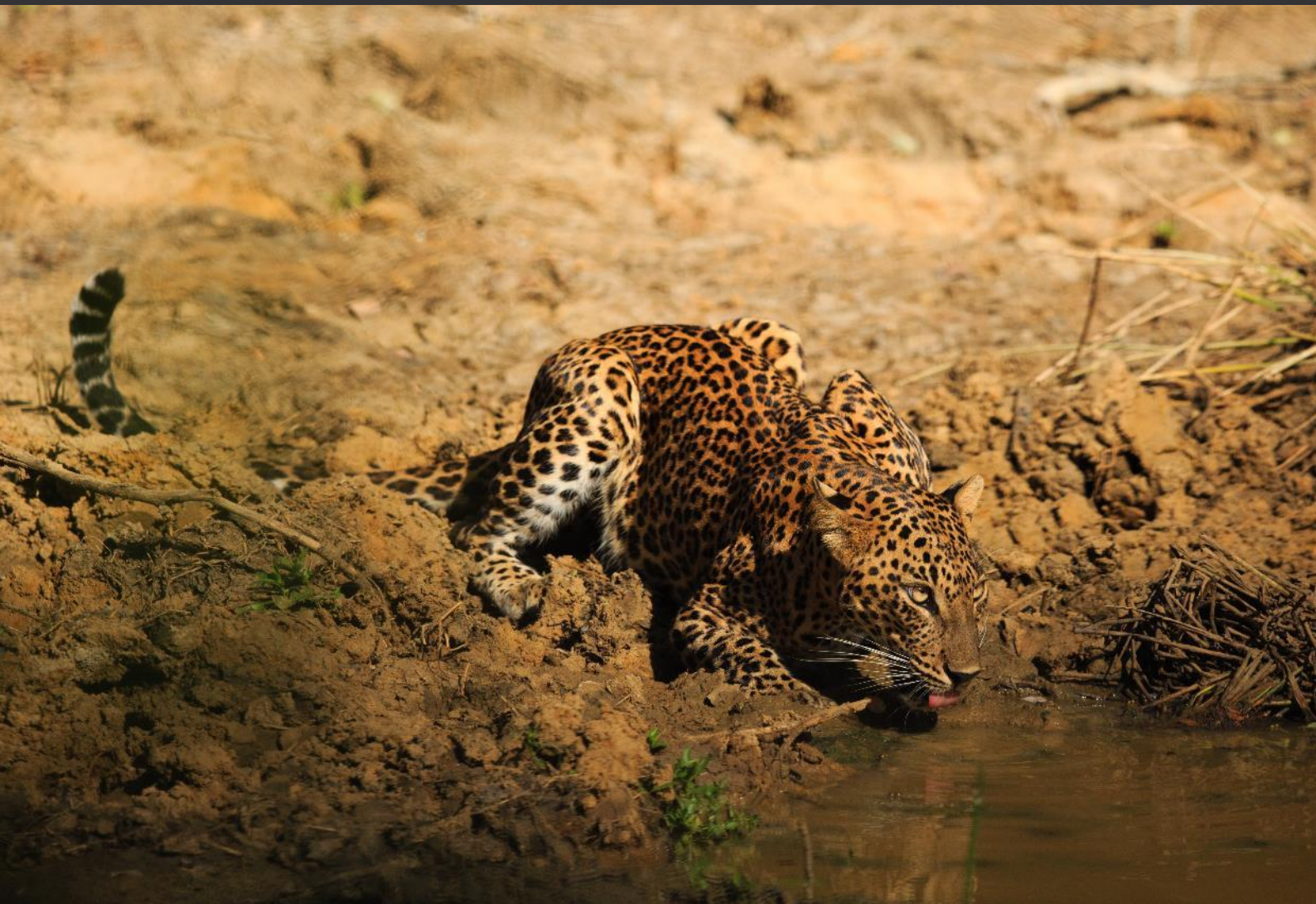




WILDLIFE, CULTURE, HILL COUNTRY OF SRI LANKA
Sri Lanka
10 Nights/ 11 Days



Let your imagination soar

Welcome to Sri Lanka

The tear drop shaped island of Sri Lanka lies in the Indian Ocean just off the southern tip of India. With its golden sandy beaches, azure blue waters and warm tropical climate, Sri Lanka is a year round destination for holidaymakers seeking sun, sand and sea.

The island has a rich cultural heritage that dates back over 2,000 years which is linked to the origins of Buddhism in the country with magnificently constructed stupas and the ruins of ancient kingdoms. Controlled from the 16th century onwards by the Portuguese, Dutch and finally the British prior to gaining full independence in 1948, the influences of colonial powers remain visible in architecture and a number of forts across the country.

Sri Lanka is recognised as a global biodiversity hotspot with a rich variety of endemic flora and fauna, and incredibly for a small island, can boast of large iconic animals such as the Asian Elephant, Leopard and the largest animal to have inhabited our planet, the Blue Whale. From palm fringed beaches to scrub jungles and numerous man-made lakes in the lowlands to tropical rainforests, cloud forests and highlands laden with waterfalls at its centre, this resplendent isle is abundant in natural beauty.

Highlights of the Itinerary:

- Explore the ruins in ancient cities of Anuradhapura & Polonnaruwa with a Primate watching Tour with an expert
- Climb the legendary rock citadel in Sigiriya
- Game drive at Minneriya and Yala National Parks
- Visit the Temple of the Sacred Tooth Relic in Kandy
- Loris and Whale watching tour
- Tea Experience Tour

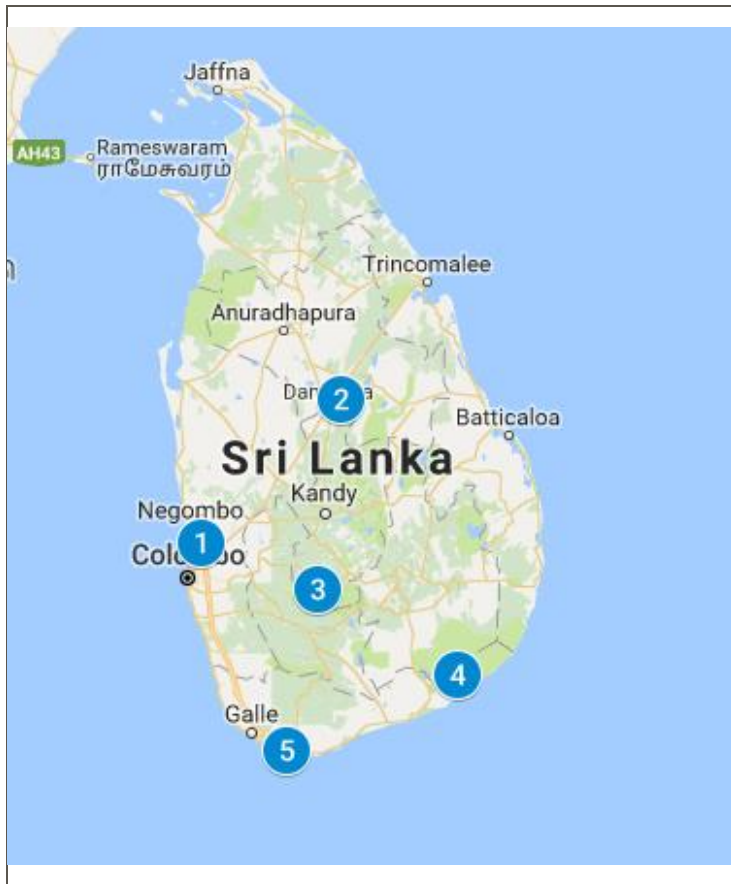
Specially created for

Wildlife & Culture Enthusiasts

Hill Country Lovers



At a glance



10 nights / 11 days

1 - Negombo (Day 1)

2 - Sigiriya (Day 2,3,4)

3 - Hatton (Day 5,6,)

4 - Yala (Day 7,8,)

5 - Weligama (Day 9,10)

AN &BEYOND CUSTOM-DESIGNED ITINERARY		
DATE	SERVICE	ACCOMMODATION
Day 1	Met on arrival by an &Beyond representative and transfer to Negombo (approx. ½ hour drive)	
	Overnight at The Wallawwa Resort ,Negombo -01 night	Garden Suite -BB
Day 2	After breakfast proceed to Sigiriya (approx. 3 ½ hour drive)	
	In the evening climb the Sigiriya Fortress	
	Overnight at Jetwing Vil Uyana ,Sigiriya -03 nights	Paddy Dwelling -HB
Day 3	After breakfast explore the city of Anuradhapura	
	In the late evening go on a Loris Watching tour at Vil Uyana	
Day 4	After breakfast visit the city of Polonnaruwa for a primate watching tour (approx. 1 ½ hour drive)	
	In the evening do a game drive at Minneriya National Park	

Day 5	After breakfast proceed to Ceylon Tea Trails, Hatton via Kandy (approx. 5 hour drive)	
	Overnight at Ceylon Tea Trails, Hatton - 2 nights	Garden Suite -AI
Day 6	Morning Tea Experience Tour	
	Evening at leisure	
Day 7	After breakfast proceed to Yala (approx. 5 hour drive)	
	Overnight at Kulu Safari ,Yala - 02 nights	AC Tent - AI
Day 8	Morning and evening game drives ay Yala National Park	
Day 9	Early morning do one more game drive at Yala National Park or Bundala National Park	
	Then proceed to Weligama (approx. 3 ½ hour drive)	
	Overnight at Cape Weligama Resort - 2 nights	Junior Suite -BB
Day 10	Early morning go on a private Whale watching tour in Mirissa	
	Spend the rest of the day at leisure	
Day 11	Transfer from Hotel to Bandaranaike International Airport for your departure flight (approx. 3 ½ hour drive). We recommend you at the airport at least 3 hours prior to the departure flight	
	** End Of Service**	

GLOSSARY

BB = Bed and breakfast

HB = Room + Breakfast + dinner

FB = Full Board basis (please check itinerary for specific includes & excludes per property)

ENTRY/VISA REQUIREMENTS

- As for all international travel, the visitor to Sri Lanka is required to be in possession of a valid passport and visa. Travellers from all countries need a visa.
- We highly recommend you to apply for online visas (US \$ 35 for Tourist Visa) to avoid unnecessary delays in trying to obtain Visa on arrival, which can take an hour or so of waiting in line. SAARC Nationals pay US \$ 20 online, and US \$ 25 if applying on arrival.
- A valid passport not less than 6 months, a confirmed return or onward air ticket and sufficient funds for the stay are the entry requirements to the country. If obtaining a visa on arrival, please pay by cash (US \$ 40 for Tourist Visa) since payment by credit cards can take longer to process. You must carry a passport sized photograph if obtaining a visa on arrival.
- Please note that the above details are subject to change, when the government authorities revise their policies.

- **SATELLITE PHONES ARE NOT ALLOWED IN SRI LANKA**

Expect the extraordinary

Day 1 - Negombo

Met on arrival by an &Beyond representative and transfer to Negombo (approx. ½ hour drive)

Check in to The Wallawwa Resort and relax

The Wallawwa, Negombo

Nestled amongst three acres of magnificent manicured gardens, The Wallawwa is an old colonial manor house which has been lovingly restored to a luxury private hideaway.

The Wallawwa boutique hotel offers colonial charm and exceptional service within five acres of tropical landscaped gardens. 17 tastefully furnished bedrooms and suites, spa, a la carte restaurant and a dedicated team of butlers ensures your every wish is catered for. The proximity to Colombo's Bandaranaike International Airport, only 30 minutes away, makes The Wallawwa an excellent choice for those who wish to have a relaxing stopover at the beginning of their holiday after their long inbound flight. Sit back and indulge in sumptuous cuisine, revitalising spa treatments, a leisurely swim and a superb night's sleep.

Overnight at The Wallawwa Resort ,Negombo for 01 night in Garden Suites on Bed & Breakfast Basis



Day 2 - Negombo - Sigiriya

After breakfast proceed to Sigiriya (approx. 3 ½ hour drive)

Check in to Jetwing Vil Uyana Resort, Sigiriya and relax

Jetwing VilUyana, Sigiriya

A member of the Small Luxury Hotels of the World, this property consists of 30 tastefully constructed dwellings that are built in and over water, paddy field, forest, marsh and garden surroundings.

Jetwing VilUyana is a true lifestyle hotel that embodies the ultimate in environmentally friendly luxury Dwellings. Inspired by the local, rural traditions, the buildings blends into the landscape. The challenge of introducing a wetland system on reclaimed agricultural lands provides the unique backdrop for this exciting property. A strong 'Back to Nature' theme pervades your every moment at Jetwing VilUyana and the uniqueness of the experience is unforgettable. The property is possibly the first hotel in Sri Lanka to construct a private nature reserve comprising of man-made lakes, wetlands and forests in a neglected area of land which was once used for disruptive slash and burn farming.

In the evening climb the legendary Sigiriya Fortress

Sigiriya Rock Fortress

Referred to as 'The Lion Rock' by locals, Sigiriya became the capital during the reign of King Kashyapa in the 4th century A.D. After slaying his own father, King Dhatusena of Anuradhapura to take the throne and fearing a retaliatory attack from the rightful heir Moggallana who fled to neighbouring India, the new King constructed his royal palace on the summit of this 200 metre high rock with a fortress for his own protection. Walk through the meticulously landscaped Royal Gardens and ascend towards the summit where only ruins of the royal palace now remain. A visit to the fresco gallery with its ancient paintings of the King's maids in waiting and the Mirror Wall with ancient transcripts that closely match the modern day Sinhalese language, should also not be missed. In 495 A.D, Moggallana returned from his exile and defeated the King re-instating Anuradhapura as the capital. Sigiriya was then used as a Buddhist monastery until the 14th century prior to being mysteriously abandoned.

Overnight at Jetwing Vil Uyana, Sigiriya for 3 nights in a Paddy Dwelling with Pool on Half Board Basis



Day 3 -Sigiriya

After breakfast explore very first capital of Sri Lanka, The city of Anuradhapura (approx. 1 ½ hour drive)

The Ancient City of Anuradhapura

Spend your day exploring the various sites located within the ancient city of Anuradhapura. Here, Buddhism has prevailed from its introduction to the current period. On religious days, the city is filled with devotees who travel from all across the Island to pay homage to the various religious sites within the ancient city by first cleansing themselves in the manmade lake and then offering flowers and prayers to the Gods. On such days, the city can be a busy place but this is a part of the wonderful experience of witnessing Buddhism through a living ancient city.

Dating back to at least 1000 BC, Anuradhapura was capital of much of Sri Lanka between the 5th century BC and the 11th century AD. It was here that Buddhism was adopted by the rulers in the 3rd century BC. Thera Mahinda, the son of the great Indian Emperor Ashoka, introduced Buddhism to the country. The city grew and was a major secular and religious site that today covers over 40 sq. km. Many places are still sites of worship and prayer. The Sacred Bo Tree grown from a cutting brought from Bodhgaya (India) by Ashoka's daughter is one important site to visit. Other sites of interest are the Ruwanweli Saya Stupa, the Isurumuniya Temple and remains from palaces, temples, monasteries and ceremonial baths situated within the site.

Return to Jetwing Vil Uyana and relax

In the late evening go on a Loris Watching tour at Vil Uyana with a resort naturalist

Loris Watch Nocturnal Excursion

In the late evening, go on a nocturnal hunt for the elusive Slender Loris which is usually found along the hotel's nature trail. Along with this small nocturnal primate, you may also see other species occasionally such as the Fishing Cat, Collared Scops Owl, Indian Civet and the Golden Palm Civet.

Overnight at Jetwing Vil Uyana, Sigiriya



Day 4 -Sigiriya

After breakfast visit the city of Polonnaruwa for a primate watching tour (approx. 1 ½ hour drive)

Primate Watching Tour

A lesser known fact is that Polonnaruwa is widely regarded to be among the top locations in the country for watching primates. Three species of monkey- the Toque Macaque and the canopy dwelling Purple-faced Leaf Monkey (both endemics) and the Grey Langur can be observed here. Polonnaruwa's 'Temple Troop of Toque Macaques' have been featured in numerous natural history documentaries and are a part of the world's longest running study on primates which has run continuously since 1968. Most recently they were the focus of Disney Nature's *Monkey Kingdom* (2015). The monkeys here are habituated to the presence of humans enabling excellent opportunities to observe their social interactions at close-range. Whether play fighting, feeding or grooming each other there is never a dull moment when watching monkeys.

Afterwards, explore the ancient city of Polonnaruwa by bicycles

Ancient city of Polonnaruwa

Known as the second most ancient kingdom of Sri Lanka, Polonnaruwa is an ancient site containing the archaeological remains of ancient structures of governance, temples and statues that reflect the great works of the ancient Kings of Sri Lanka.

Polonnaruwa took its place in history after King Vijayabahu I defeated the invading Cholas and moved the capital from Anuradhapura to Polonnaruwa. While King Vijayabahu is credited with the creation of Polonnaruwa as the second ancient capital of Sri Lanka, real change came to Polonnaruwa during the golden reign of King Parakramabahu I. The King was instrumental in monumental changes and development from an agricultural perspective to Polonnaruwa where his royal decree was that not a single drop of rain should be wasted. Polonnaruwa is a UNESCO listed world heritage site.

In the evening do a game drive at Minneriya National Park in search for Wild Elephants

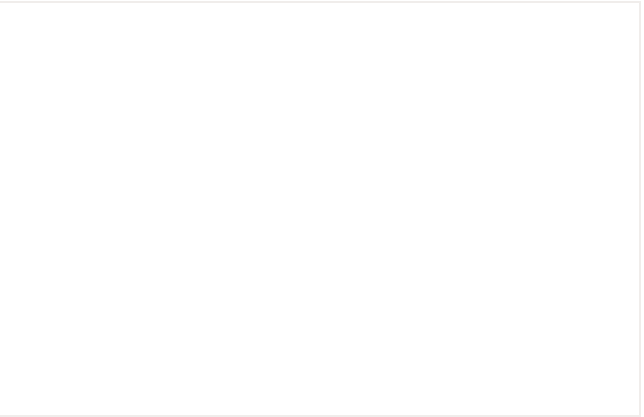
Minneriya National Park Game Drive

The Gathering of Elephants, which is ranked among the world's top wildlife viewing spectacles runs from June - October each year. Each afternoon, around 150-200 individual elephants come out of the forest in to the open to graze on the fresh green pasture by the water's edge at Minneriya and Kaudulla national parks. You have excellent



opportunities here to observe the social dynamics of the Asian Elephant as the large bulls in musth compete among each other and seek the females within the herd, while young calves with carefree abandon get up to their mischievous antics often to the displeasure of its alert mothers within the herd.

Overnight at Jetwing Vil Uyana, Sigiriya



Day 5 -Sigiriya-Kandy -Hatton

After breakfast proceed to Ceylon Tea Trails, Hatton via Kandy (approx. 3 hour drive)

Temple of the Sacred Tooth Relic Kandy

Referred locally as the Sri Dalada Maligawa, the Temple of the Sacred Tooth Relic is the most revered site in the country. The Temple was built in the 16th century AD and is located adjacent to the Royal Palace complex of the former Kingdom of Kandy and overlooks the expanses of the Kandy Lake. Housing the sacred tooth relic of the Lord Buddha, the building has held a significant role in local politics since ancient times, with a belief that whoever holds the relic has the right to govern the country. The sacred tooth was smuggled in to Sri Lanka from India by a princess in the 4th century AD and was initially kept in Anuradhapura and then moved across the country over time before being housed in Kandy. This sacred temple attracts thousands of white-clad pilgrims on a daily basis bearing lotus blossoms and frangipani for their offerings which are known as pujas. Ensure that you dress appropriately, wearing clothes that cover your legs and shoulders and please do remove your shoes before entering the holy temple.



Check in to Ceylon Tea Trails, Hatton and relax

Ceylon Tea Trails:

Sri Lanka's first Relais & Chateaux resort, comprises five luxurious colonial era tea planters' bungalows, connected by walking trails through stunningly beautiful Ceylon tea gardens. Each of the five bungalows is different. Summerville with an air of a country cottage, Castlereagh with an eclectic style of its own, the high colonial Tientsin, one of the first planter's residences to be built in Ceylon, the more modern Norwood abounding with 50's character and Dunkeld, the



new bungalow offering spectacular views of Castlereagh Lake and the Great Western mountain range .

Built between 1888 and 1950, the bungalows offer a taste of gracious living thanks to butler service & period furnishings, accompanied by gourmet meals. Follow the Tea Trail from one unique bungalow to the next, staying a night or two at each or just laze in one. Trek, bike or picnic at spectacular locations each day in cool comfort. You can book a room or the entire bungalow and relish a luxury holiday in the heart of Sri Lanka's breath-taking Ceylon tea country.

Overnight at Ceylon Tea Trails, Hatton for 2 nights in a Garden Suite on All Inclusive Basis



Day 6 -Hatton

Morning go on a Tea Experience Tour with a resort specialist

Ceylon Tea trails Tea Experience

This is the essential Tea Trails experience. The Resident Tea Planter will show you first hand the age-old tea making process. First, follow the trail of the planters of old Ceylon, as they trekked through the dense jungle looking for the best slopes on which to plant tea. Then on to watch the tea pluckers pick two leaves and a bud with deft hands. Then to the factory where the all-important conversion to “made” black tea happens. The machinery used is of very traditional British design, some as old as 100 years. The process is a very artisanal one, unchanged for a century. The daily complimentary tour ends with a tasting of different grades of this great brew. Together with tea-infused cuisine, tea based spa treatments and trekking trails that traverse tea-blanketed hills, you can literally lose yourself in tea. You will leave Tea Trails with a newly found appreciation of this wonder herb “Camellia Sinensis” & the terroir of Ceylon Tea.



Day 7 -Hatton- Yala

After breakfast proceed to Yala (approx. 5 hour drive)

Check in to Kulu Safari, Yala

Kulu Safaris, Yala

Experience a unique alternative to standard hotel based holidays. Sleep in customized tents, have hot and cold showers, with gourmet dining under the stars with Kulu Safaris.

Kulu Safaris is Sri Lanka's pioneer operator of tented camping safaris. Located in exclusive surroundings in the outskirts of Yala National Park, Kulu Safaris consist of 6 large en-suite tents which include 2 for families. An all-inclusive package includes game drives, meals and beverages including local spirits, wine and beer. The tents come equipped with hot and cold water and electricity.

Kulu Safaris offers spacious and customised land cruisers, which are modified to optimize both wildlife viewing and photography and are led by a team of experienced drivers and naturalists who are renowned for their deep understanding and knowledge of the Yala National Park and its diverse wildlife.

Overnight at Kulu Safari ,Yala for 02 nights in an AC Tent on All Inclusive Basis



Day 8- Yala

Morning and evening game drives ay Yala National Park

Yala National Park

Yala National Park is located in the south-east corner of Sri Lanka and is the most popular destination for wildlife viewing. Leopards are the star attraction at Yala and Block I is believed to have the highest concentration of these big cats in the world. Leopards however are



elusive by nature and we recommend a minimum of three to four game drives to have the best opportunities for good encounters. Asian Elephant, Sloth Bear, Jackal, Sambar, Spotted Deer Buffalo, Wild boar and the Grey Langur are among the other larger mammals that may be seen.

During the dry season which spans from June to September, large concentrations of Muggar Crocodile are can be seen in the dwindling waterholes. Yala is also an excellent birding destination with close to 300 avian species recorded; Indian Peafowl and Sri Lanka Jungle fowl, Changeable Hawk Eagle, Painted Stork, Malabar-pied Hornbills, Chestnut, Green and Blue-tailed Bee-eaters are among the species seen regularly in Yala. The varied landscapes from lagoons, beaches to rocky outcrops immersed among the scrub jungle are also a treat to the eye as you search out the park's wildlife.

Yala's varied habitats from rocky outcrops, riverine forests, scrub jungle and numerous waterholes make it an excellent destination for birders especially for dry-zone species with around 300 recorded species. At the waterholes and shallow lagoons, Painted Stork, Lesser Adjutant Stork, Asian Open bill, Indian Darter, Common Kingfisher are among a variety of water birds routinely seen. Yala is also one of the few locations where the critically endangered Black-necked Stork may be seen. Among the branches and scrub jungle vegetation, keep your eyes out for Blue-faced Malkoha, Green Bee-eater, Orange-breasted Green Pigeon and flocks of noisy Malabar-pied Hornbill. The strikingly beautiful Indian Peacock and the country's national bird, the Sri Lanka Jungle fowl are abundant here with the male peacocks routinely dancing and coming in to breeding plumage during the months of October to March in the wet season.



Overnight at Kulu Safari ,Yala

Day 9 - Yala - Weligama

Early morning do one more game drive at Yala National Park or Bundala National Park

Then proceed to Weligama (approx. 3 ½ hour drive)

Check in to Cape Weligama Resort and relax



The Cape Weligama, Weligama:

Cape Weligama is a luxurious resort, home to a gorgeous collection of 40 free-standing villas and suites and is the only Relais & Chateaux property on the south coast of the island. Infinite 270-degree panoramas of the Indian Ocean and rugged coastline are celebrated from every curvaceous corner of this meticulously landscaped property, perched on a cliff top rising up to 36 meters (118.11 feet) above sea level.

There are two adjacent public beaches. West Beach is accessed via a specially built cliff staircase while East Beach is next to the Dive Centre, a 5-minute walk from the resort. A reef provides safe swimming conditions and with no large resorts nearby, the beaches are not busy. The Beach Club and Dive Centre is staffed by professionals and is the embarkation point for all land and water-based activities. Offering first-rate PADI dive courses and exciting dives, other activities include private cruises, big game fishing, seasonal whale and dolphin watching trips and banana boating.

Innovative wining and dining venues hug the lofty cape and are complemented by a spectacular 60 meter (196.85 feet) crescent shaped infinity pool seamlessly merging with the ocean. All villas and suites have ocean views, with private butler services and individual gardens, dining and spa facilities.

Overnight at Cape Weligama Resort for 2 nights in Junior Suite on Bed & Breakfast Basis



Day 10 - Weligama

Early morning go on a private Whale watching tour in Mirissa

Whale Watching Mirissa

Mirissa is regarded as the world's top location for watching Blue Whales with sightings occurring on most mornings during the season which spans from mid. November through to mid. April. The Blue Whales are resident to the Indian Ocean and live year-round in these waters and encounters of mother and calves, pairs of males and females are recorded every season. Pods of Spinner Dolphin are seen on most mornings while Sperm Whales are occasionally seen especially around December and again in March-April sometimes in super pods numbering over 30 individuals, which is quite the spectacle to witness first hand. Bryde's Whale, Orca, Risso's Dolphin, Bottlenose Dolphin and Striped Dolphin are among the other species of cetaceans which are seen a few times each season. Excursions typically average around 4-5 hours in duration and the boats usually return back to the harbour around noon.

Spend the rest of the day at leisure

Overnight at Cape Weligama Resort



Day 11 - Departure

Transfer from Hotel to Bandaranaike International Airport for your departure flight (approx. 3 ½ hour drive). We recommend you at the airport at least 3 hours prior to the departure flight

Journey overview

Accommodation

DATE	DESTINATION	ACCOMMODATION	DETAILS
Day 01	Negombo	The Wallawwa Resort	Garden Suites Bed & Breakfast Basis
Day 02	Sigiriya	Jetwing Vil Uyana	Paddy Dwellings Half Board Basis
Day 03	Sigiriya	Jetwing Vil Uyana	Paddy Dwellings Half Board Basis
Day 04	Sigiriya	Jetwing Vil Uyana	Paddy Dwellings Half Board Basis
Day 05	Hatton	Ceylon Tea Trails	Garden Suites All Inclusive Basis
Day 06	Hatton	Ceylon Tea Trails	Garden Suites All Inclusive Basis
Day 07	Yala	Kulu Safari	AC Tents All Inclusive Basis
Day 08	Yala	Kulu Safari	AC Tents All Inclusive Basis
Day 09	Weligama	Cape Weligama Resort	Junior Suites Bed & Breakfast Basis
Day 10	Weligama	Cape Weligama Resort	Junior Suites Bed & Breakfast Basis

What's included:

- Accommodation at the Hotels and as per the meal plans mentioned above.
- All transport services using 01 Air-conditioned Vehicle based on options provided.
- All sightseeing and related entrance charges as mentioned in the itinerary.
- We will be providing an English speaking Chauffeur Guide throughout the tour.
- Bottle water during sightseeing tours and long drives.
- All presently applicable government taxes.
- Ceylon Tea Trails All Inclusive package includes: Bed tea, full English or Sri Lankan breakfast, 3-course lunch or rice and curry (gourmet packed lunch if on excursion), traditional afternoon cream tea (scones, clotted cream; jams; cakes; sandwiches), pre-dinner cocktails, 4-course gourmet dinner, a selection of international wines, premium spirits & liqueurs, beer (Alcohol will not be served on Poya full moon days and other days prohibited by the Govt.), juice and soft drinks, tea & coffee, laundry, calls within Sri Lanka, the "Tea Experience" tea fields & factory tour with our planter/naturalist-in-residence & bungalow amenities including Wi-Fi.
- Kulu Safaris All Inclusive Package includes: : Accommodation, park entrance fees, game drives, all meals and snacks, local liquor, beer, house wine, soft drinks, tea and coffee, bottled water.

What's not included:

- Sri Lankan Visa
- Lunch and Dinner unless stated otherwise
- Beverages, unless stated otherwise
- Items of a personal nature such as laundry, phone calls etc.
- Any hotel early check ins or late check outs unless stated otherwise.
- Any Insurance
- International and domestic airfare unless stated otherwise.
- Tips to guides, airport and hotel porters and restaurants. (Tipping is expected!)
- Any change in tax structure resulting from the hike in published tariff.
- Any other item not explicitly mentioned under included price.