

Hotel Le Meridien Tahiti - 4*

Slightly eccentric, Le Méridien Tahiti is the only hotel located on a beautiful white sandy beach and a turquoise lagoon, with view on Moorea island. This authentic resort, having nothing to envy of the islands hotels, completely renovated in 2010, will delight all types of clients, especially on stays longer than one night.

It is located 30 minutes from the golf Atimaono (18 holes), the Botanical Garden and the Gauguin Museum, just few steps from the small shopping center Tamanu and the Museum of Tahiti & her islands. Downtown Papeete is about 20 minutes from the hotel : shuttle service by "truck", transportation typical of Tahiti, is available twice a day.

Location

15 minutes from airport

20 minutes from pier/Papeete

Transfers by bus or private car with our services.

Paying Shuttle to Papeete by "truck" available twice a day - 20 min.



Welcome Amenities : Refreshing towel upon Arrival

Specified Welcome Gifts may be replaced without notice by others with same value.



Room Categories

25	Garden Room	3A	Wheelchair accessible
6	Garden Room Family	4A	From April 1st, 2013, Max. occupancy reduced to 2A+2C
67	Deluxe Ocean View Room	3A	Wheelchair accessible
4	Deluxe Ocean View Room Family	4A	From April 1st, 2013, Max. occupancy reduced to 2A+2C
27	Panoramic Ocean Front Room	3A	Our preferred category!
5	Junior Suite	3A	
2	Senior Suite	3A	
1	Presidential Suite	3A	
12	Overwater Bungalow	3A	From April 1st, 2013, Max. occupancy reduced to 2A+1C

Check In 14H00 - Check Out 11H00

Dining - Entertainment Features

LA PLANTATION Local & French Cuisine & Polynesian Buffets, Central - 250 seats

Breakfast : Monday - Saturday 06H00 - 10H00, Sunday 06H00 - 11H00

Before 06H00 a continental breakfast can be served at the Latitude bar in the Lobby

Dinner on Sunday, Monday, Tuesday, Thursday 19H00 - 22H30

Dinner on Wednesday, Friday, Saturday 19H00 - 22H00

Seafood Buffet with Polynesian show on Friday night.

LE CARRE Fine Cuisine, Beachfront - 60 seats

Lunch : Monday to Friday 12H00 - 14H00, Saturday & Sunday 12H00 - 15H00

Dinner : 19H00 - 22H00

ROOM SERVICE available from 05H30 to 11H00

POOL BAR 10H00 to 22H30 for the Bar, 11H00 to 18H00 for the snack
ASTROLABE 16H00 to 00H00

The hotel can accommodate up to 500 persons - 3 **Conference Rooms** with all A/V equipment

Facilities and Activities

Internet Access

Free Internet Access on hotel's computers in the lobby (per 30 minutes sessions)

WIFI Access in Public Areas and Guests Rooms with personal laptop charged: 5 € /25 min, 8€ /1 hour, 34€ /24hrs, 59€ /72 hrs.

Le Méridien Tahiti opens for his guests doors of cultural and rewarding spaces.

L'Atelier will receive you to discover local work of art. You will have the opportunity to observe some artists practising on the spot and practise yourself during workshops.

Opening hours: Monday -> Friday 9H00 - 18H00 & Saturday 9H00 - 12H00

L'Atelier du Chef invites you to create your own meals during cuisine lessons, which will excite taste buds of gourmets.

Savery Delights Courses Thursday & Saturday 10H00 - 12H00, Sweet Delights Courses Sunday 14H00 - 16H00

Wellness Center - Massages & Body and Facial Treatments

Open daily, on appointment from 08h00 to 19h00

Pool Activites

Complimentary Yoga lessons and aquagym course on week days.

Concierge 24/24

Free activities: Aquagym, Beach Towels Provided, Kayaks, Canoe, Petanque, Snorkeling Equipment, Tennis Court, Tennis Table, Volleyball,

Other Facilities: Art Courses, Baby Sitting, Boutiques, Business Center, Cooking Lessons, Ice Machine, Laundry Service, Swimming Pool, Tour Desk,

Exclusive Services

In Room Touches as french sweet pastries, fruit basket, Red Wine, Bottle of Champagne...

Romantic Dinners as Candlelight Dinner under the Stars

Polynesian Weddings ceremonies with traditional songs and dances

Children

Dependable babysitting services at a rate of 13€ per child per hour (17€ during bank holidays). Please note that it is recommended that babyitters be booked at least 48 hours in advance.

Important Remarks

Information on this Factsheet is subject to change without prior notice.

Accepted Credit Cards - Visa, Mastercard, American Express, Diners Club



Room Facilities

Air Conditioning, Bathtub, Balcony, Bathrobe, Cable TV, Ceiling Fan, Coffee / Tea Facilities, DVD/CD Player, Hair Dryer, In Room Internet Access, iPod Station, Mini Bar, Radio, In Room Safety Box, Shower, Telephone,

Garden Room

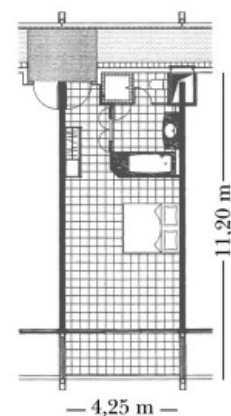
Large sun drenched bedroom - located on the first or the second floor of the resort, offering breathtaking views over lush gardens, banana and coconut trees, tropical colourful Tipanier and Tiare flowers. All rooms also overlook a 2000m² (21000sqft) sandy bottom swimming pool -unique in the south Pacific. Entirely refreshed in 2010 with warm colours and Polynesian touches, garden rooms comprise a 48m² bedroom, a large bathroom with double sink, separate bath, shower and toilets and a large terrace or balcony.

Maximum Occupancy: 3A

Bed Configuration: 1 king bed or 2 single beds + 1 sofa bed

More Info: Interior 48m²

Additional facilities:



Room 47,6 m²

Garden Room Family

Same as Garden Room, but with 2 queen size beds.
From April 1st, 2013, Max. occupancy reduced to 2A+2C

Maximum Occupancy: 4A

Bed Configuration: 2 double beds

More Info: Interior 48m²

Additional facilities:

Deluxe Ocean View Room

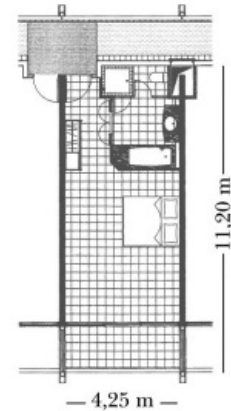
The 48m² (520sqft) deluxe ocean view rooms- located from 2nd to 4th floors, have been entirely renovated in 2010 and feature contemporary neutral-toned furniture and linens, soothing lighting and authentic Polynesian touches including authentic "tapa" cloth lights and tables shaped like surfboards, hard wood floor, inviting "Meridienne" sofa bed for an ambience energizing and relaxing. These rooms offer generous views over the white sandy beach and lush gardens of the resort, the crystal clear lagoon of Tahiti and the sister island of Moorea.

Maximum Occupancy: 3A

Bed Configuration: 1 king bed or 2 single beds + 1 sofa bed

More Info: Interior 48 m²

Additional facilities:



Room 47,6 m²

Deluxe Ocean View Room Family

The only difference between the Family and the standard version of the Deluxe Lagoon/Ocean View Room is the bed configuration. From April 1st, 2013, Max. occupancy reduced to 2A+2C

Maximum Occupancy: 4A

Bed Configuration: 2 double beds

More Info: Interior 48m²

Additional facilities:

Panoramic Ocean Front Room

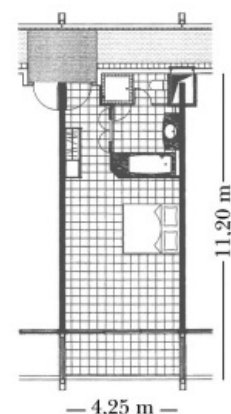
Located on the top floors, with 180° breathtaking views over the lagoon and the sister island of Moorea, the 48m² (520 sqft) deluxe panoramic room has been entirely re-designed in 2010 and features contemporary neutral-toned furniture and linens, soothing lighting and authentic Polynesian touches including authentic "tapa" cloth lights and tables shaped like surfboards, hard wood floor, inviting "Meridienne" sofa bed.

Maximum Occupancy: 3A

Bed Configuration: 1 king bed or 2 single beds + 1 sofa bed

More Info: Interior 48m²

Additional facilities: Complimentary Bottle of Water, Espresso Coffee machine,



Room 47,6 m²

Junior Suite



Ideally located in the central part of the resort, the Junior Suites offer exquisite views over the beautiful tropical gardens and the breathtaking turquoise waters of the lagoon of Tahiti.

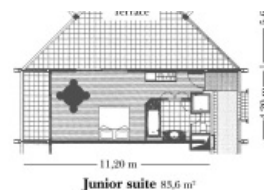
The 84m² (930sqft) contemporary junior suites are nicely appointed with warm timber floor and exotic wood furniture, a spacious private terrace - set-up as an open air living room, a large air conditioned king bedded bedroom and fully equipped bathroom: the utmost combination of luxury and local Polynesian touches.

Maximum Occupancy: 3A

Bed Configuration: 1 king bed + 1 sofa bed

More Info: Interior 84m²

Additional facilities: Espresso Coffee machine, Le Meridien Signature Bed, TV flat screen x 2,



Senior Suite

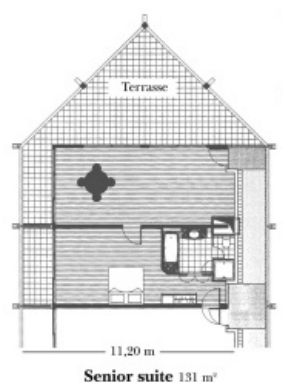
Quietly located at the very end of the building, both 131m² (1400 sqft) senior suites offer dramatic views over the crystal clear lagoon of Tahiti and the sister island of Moorea, and are the most luxurious accommodation on the island, modern yet Polynesian. Large contemporary living room with unobstructed vista over the Pacific Ocean, comfortable bedroom with exotic designs, are some of the luxury features of the senior suites.

Maximum Occupancy: 3A

Bed Configuration: 1 king bed + 1 sofa bed

More Info: Interior 131m²

Additional facilities: Espresso Coffee machine, Le Meridien Signature Bed, TV flat screen x 2,



Presidential Suite

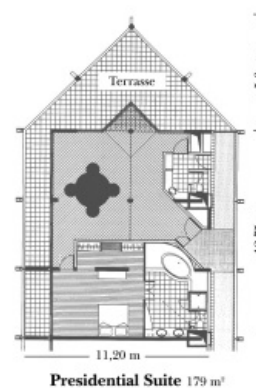
Located on the top floor of the main building, the Presidential suite at le Meridien Tahiti offers a unique and unsurpassed experience on the island of Tahiti. The 179m² (1930 sqft) opulent suite features exquisite views over exotic gardens, crystal clear lagoon and deep blues of the Pacific Ocean. From a large outside fully furnished terrace to the more intimate bedroom with canopy bed and the sun-drenched living room, you will enjoy every minute of your stay.

Maximum Occupancy: 3A

Bed Configuration: 1 king bed + 1 sofa bed

More Info: Interior: 179 m²

Additional facilities: Espresso Coffee machine, Le Meridien Signature Bed, TV flat screen x 2, Walk-in Closet,



Overwater Bungalow

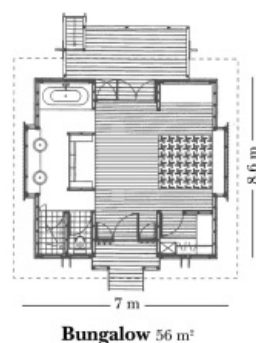
Suspended over the crystal clear lagoon of Tahiti, the overwater bungalow offers the ultimate experience in Polynesia: luxurious yet traditional Tahitian accommodation and breathtaking views on a rich coral garden, colourful fishes and marine life. These thatched roof bungalows feature local woven palm walls, romantic canopy bed, lovely timber floor, large terrace, Polynesian style bathroom and open views to the reef. Access to the lagoon by the end of pontoon.

April 1st, 2013, Max. occupancy reduced to 2A+1C

Maximum Occupancy: 3A

Bed Configuration: 1 king bed + 1 sofa bed

More Info: Interior 56 m². Water depths around 2,50 meters.



Additional facilities: NO Direct Access to Lagoon,
