

The Wildlife Experience - Sri Lanka 12 Days / 11 Nights

Summer (May - October)

HIGHLIGHTS OF THE ITINERARY:

- Dolphin watching off Trinconalee
- Watching 'The Gathering of Elephants' at Minneriya, ranked amongst the world's top wildlife spectacles
- Primate watching at Polonnaruwa
- Climb the Sigiriya Rock Fortress
- Seeking highland endemics and going on a scenic nature walk at Horton Plains
- Guided safaris to Yala National Park in search of larger animals including Leopard, Asian Elephant, Sloth Bear, Jackal and Mugger Crocodile as well as a number of dry-zone bird species

SPECIALLY CREATED FOR:

- Wildlife Enthusiasts

Welcome to Sri Lanka

The tear drop shaped island of Sri Lanka lies in the Indian Ocean just off the southern tip of India. With its golden sandy beaches, azure blue waters and warm tropical climate, Sri Lanka is a year round destination for holidaymakers seeking sun, sand and sea.

The island has a rich cultural heritage that dates back over 2,000 years which is linked to the origins of Buddhism in the country with magnificently constructed stupas and the ruins of ancient kingdoms. Controlled from the 16th century onwards by the Portuguese, Dutch and finally the British prior to gaining full independence in 1948, the influences of colonial powers remain visible in architecture and a number of forts across the country.

Sri Lanka is recognised as a global biodiversity hotspot with a rich variety of endemic flora and fauna, and incredibly for a small island, can boast of large iconic animals such as the Asian Elephant, Leopard and the largest animal to have inhabited our planet, the Blue Whale. From palm fringed beaches to scrub jungles and numerous man-made lakes in the lowlands to tropical rainforests, cloud forests and highlands laden with waterfalls at its centre, this resplendent isle is abundant in natural beauty.

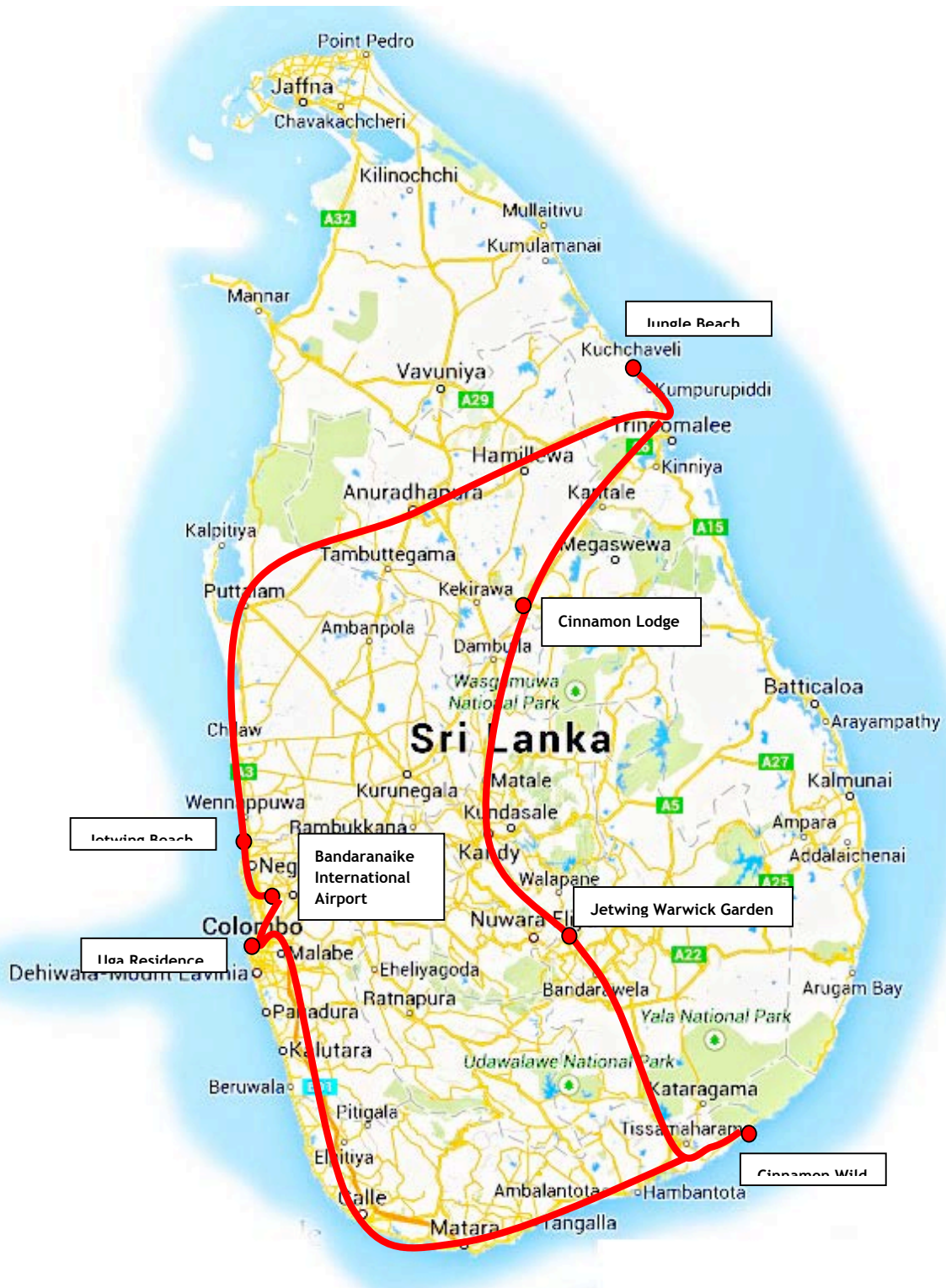
THE WILDLIFE EXPERIENCE IN SRI LANKA (SUMMER)



AN &BEYOND CUSTOM-DESIGNED ITINERARY

DATE	SERVICE	ACCOMMODATION
DAY 01	On arrival at Bandaranaike International Airport, Colombo, transfer to Negombo	
	Spend 01 night at Jetwing Beach, Negombo	Deluxe Room - B&B
DAY 02	Morning, leave for Jungle Beach in Trincomalee via Anuradhapura (5 ½ hour drive). You have the option of going on a guided tour of this ancient capital.	
	Remainder of the day at leisure.	
	Spend 02 nights at Jungle Beach, Trincomalee	Lagoon Cabin - B&B
Day 03	Morning, go dolphin off Trincomalee. Blue whales are seen intermittently.	
	Overnight at Jungle Beach, Trincomalee	
Day 04	Morning, leave for Cinnamon Lodge in Habarana (2 ½ hour drive)	
	Afternoon, visit Minneriya National Park to view 'The Gathering of Elephants'	
	Spend 02 nights at Cinnamon Lodge, Habarana	Deluxe Room - H/B
DAY 05	Morning, visit the ancient ruins in Polonnaruwa with an added focus on looking for primates which include Toque Macaque, Grey Langur and the Purple-faced Leaf Monkey	
	Afternoon, visit Minneriya National Park to view 'The Gathering of Elephants'	
	Overnight at the Cinnamon Lodge, Habarana	Deluxe room - H/B
DAY 06	Early morning, climb the Sigiriya Rock Fortress	
	Morning, leave for Jetwing Warwick Gardens in Ambewala passing through Nuwara Eliya (5 ½ hour drive)	
	Spend 02 nights at Jetwing Warwick Gardens	Deluxe Room - B&B
DAY 07	Morning, visit Horton Plains National Park in search of highland flora and fauna and trek to World's End viewpoint	
	Afternoon at leisure.	
	Overnight at Jetwing Warwick Gardens	Deluxe Room - B&B
DAY 08	Morning, leave for Cinnamon Wild in Yala (5 hour drive)	
	Afternoon safari at Yala National Park	
	Spend 03 nights at Cinnamon Wild, Yala	Jungle Chalet - H/B

DAYS 09-10	Early morning and late afternoon safaris at Yala National Park	
	Overnight at Cinnamon Wild, Yala	Jungle Chalet - H/B
DAY 11	Early morning, one last safari at Yala National Park	
	Late morning, leave for the Uga Residence, Colombo (6 hour drive)	
	Spend 01 night at the Uga Residence, Colombo	Park Suite - B&B
DAY 12	Transfer to Bandaranaike International Airport (1 hour drive)	
	*** End of Services ***	
GLOSSARY		
<ul style="list-style-type: none"> • B&B = Bed and Breakfast Basis • HB = Half Board (Dinner and Breakfast only) 		

Tour Plan - Sri Lanka



Map Legends	
Approximation of intended route	
Main destination	

DETAILED ITINERARY:

DAY 1

You will be met on arrival by a representative of &Beyond and transferred to Negombo (approx. ½ hour drive). Check-in to Jetwing Beach in Negombo and relax after your long flight.

Jetwing Beach, Negombo:

Located on the golden sands of Negombo, stands Jetwing Beach, a resort par excellence. Effortlessly combining beauty and luxury, Jetwing Beach belongs to the prestigious group of Small Luxury Hotels of the World and is the ideal getaway for sophisticated relaxation. Designed by the internationally renowned Sri Lankan architect, Geoffrey Bawa, the hotel is a wonderful example of Sri Lankan design amidst a tropical paradise. A magnificent pool to swim in, a Spa full of wellness treatments and elegant rooms to escape to at the end of a fabulously invigorating day. With five different options for dining guests are assured of delectable dishes which feature delicious local and international cuisine.

Remainder of the day at leisure.

Spend 01 night at Jetwing Beach in Negombo. Accommodation is in a Deluxe Room. Your stay is on bed and breakfast basis.



Jetwing Beach, Negombo



Jetwing Beach, Negombo

DAY 2

Morning, leave for Jungle Beach in Trincomalee on the east coast travelling through Anuradhapura (3 ½ hour drive to Anuradhapura; 1 ½ hour drive from Anuradhapura to Trincomalee).

You can stopover at Anuradhapura for a brief tour of this ancient capital. Dating back to at least 1000 BC, Anuradhapura was capital of much of Sri Lanka between the 5th century BC and the 11th century AD. It was here that Buddhism was adopted by the rulers in the 3rd century BC. Thera Mahinda, the son of the great Indian Emperor Ashoka, introduced Buddhism to the country. The city grew and was a major secular and religious site that today covers over 40 sq km. Many places are still sites of worship and prayer. The Sacred Bo Tree grown from a cutting brought from Bodhgaya (India) by Ashoka's daughter is one of the sites we will visit.

Afterwards, proceed to Jungle Beach and spend the remainder of the day at leisure.

Jungle Beach, Trincomalee:

In the little coastal village of Kuchchaveli in the outskirts of Trincomalee, on the eastern seaboard of Sri Lanka, Jungle Beach is every bit as its name implies; spectacularly set in an entirely natural

and harmonious blend of Sri Lanka's most celebrated virtues - its wondrous beaches and teeming jungles. There are 48 luxurious villas of modern design yet crafted from indigenous materials as to appear born of the jungle and fused in harmony with the natural surroundings all offering spectacular views of the ocean. Each villa tucked deeply within luscious foliage, offers utmost privacy and seclusion. Nestled within a secluded 10-acre reserve, sandwiched between the vast Indian Ocean and a lagoon filled with colourful avian species, this luxury beach resort beckons with over 4km of private beaches, tropical mangroves and endless pursuits.

Spend 02 nights at Jungle Beach in Trincomalee. Accommodation is in a Lagoon Cabin. Your stay is on a Bed & Breakfast basis.



Ruwanwelisaya, Anuradhapura



Jungle Beach, Trincomalee

DAY 3

Morning, go whale and dolphin watching. Along with Mirissa in the south, Trincomalee on Sri Lanka's east coast is the island's second established location for whale watching the Blue Whale. The deep waters around Trincomalee's natural harbour can often result in the Blues coming very close to shore and are occasionally seen from the land from a viewpoint at Swami Rock. The sightings of Blue Whales and pods of Sperm Whales off Trincomalee peak from March through to April although chance encounters are possible during other periods. Pods of Spinner Dolphins in their hundreds are encountered on most days.

Remainder of the day at leisure by the beach. You have the option of going snorkelling in the late afternoon at Pigeon Island (excluded from quoted price).

Overnight at Jetwing Vil Uyana. Accommodation is in a Paddy / Marsh Dwelling. Your stay is on a Bed & Breakfast basis.



Spinner Dolphins on the move



Jungle Beach, Trincomalee

DAY 4

Morning, leave for Cinnamon Lodge in Habarana (2 ½ hour drive).

Cinnamon Lodge, Habarana:

Sprawled over 27 acres of lush forested land, and one of the foremost Sri Lanka resorts, Cinnamon Lodge Habarana, is an exclusive hideaway for the entire family. Maintaining over 1700 trees, time stands still enabling guests to experience serenity and tranquillity while walking along the paths that lead up to the chalet-type rooms. The architect of the property derived inspiration from the glorious remains of Ritigala - a monastery that dates back to the 6th Century.

In the afternoon, visit Minneriya National Park to witness ‘The Gathering of Elephants’, which is ranked among the world’s top wildlife viewing spectacles. Each afternoons elephants numbering around 150 - 200 individuals come out of the forest in to the open to graze on the fresh green pasture by the water’s edge. You have excellent opportunities here to observe the social dynamics of the Asian Elephant as the large bulls in musth compete among each other and seek the females within the herd, while young calves with carefree abandon get up to their mischievous antics often to the displeasure of its alert mothers within the herd.

Spend 02 nights at Cinnamon Lodge, Habarana. Accommodation is in a Deluxe Room. Your stay is on a Half Board basis.



Elephants at Minneriya National Park



Cinnamon Lodge, Habarana

DAY 5

In the morning, visit Polonnaruwa (1 ½ hour drive). The ancient heart of Sri Lanka and a UNESCO World Heritage Site, Polonnaruwa, is still well-preserved with 12th century ruins & impressive stone culture that recalls an inspired past. Surprisingly, Polonnaruwa is widely regarded to be among the top locations in the country for watching primates. All three species of monkey- the toque Macaque and the canopy dwelling Purple-faced Leaf Monkey (both endemics) and the Grey Langur can be observed here. Polonnaruwa’s ‘Temple Troop of Toque Macaques’ have been featured in numerous natural history documentaries are a part of the world’s longest running study on primates which has run continuously since 1968. The monkeys here are habituated to the presence of humans enabling excellent opportunities to observe their social interactions at close-range. Whether play fighting, feeding or grooming each other there is never a dull moment when watching the antics of the Langurs and Macaques.

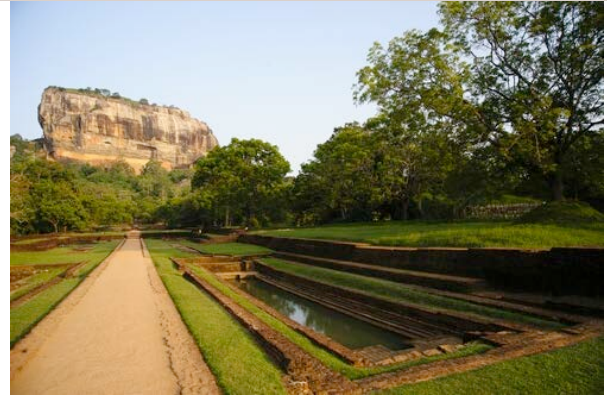
In the afternoon, visit Minneriya National Park once more to view ‘The Gathering of Elephants’.

Afterwards return to the hotel and spend the evening at leisure.

Overnight at at Cinnamon Lodge, Habarana. Accommodation is in a Deluxe Room. Your stay is on a Half Board basis.



Vatadage in Polonnaruwa



SIGIRIYA ROCK FORTRESS

DAY 6

Early morning, climb the Sigiriya Rock Fortress, which is referred to as ‘The Lion Rock’ by locals. Sigiriya became the capital during the reign of King Kashyapa in the 6th century A.D. After slaying his own father, King Dhatusena of Anuradhapura to take the throne and fearing a retaliatory attack from the rightful heir Moggallana who fled to neighbouring India, the King constructed his royal palace on the summit of this 200 metre high rock with a fortress for his own protection. Walk through the meticulously landscaped Royal Gardens and ascend towards the summit where only ruins of the royal palace now remain. A visit to the fresco gallery with its frescoes and the Mirror Wall with ancient transcripts that closely match the modern day Sinhalese language, should also not be missed. In 495 A.D, Moggallana returned from his exile and defeated the King re-instating Anuradhapura as the capital. Sigiriya was then used as a Buddhist monastery until the 14th century prior to being mysteriously abandoned.

Afterwards, return to your hotel. In the late morning, leave for Jetwing Warwick Gardens in Ambewala in the outskirts of Nuwara Eliya in the highlands and enjoy spectacular views of the paddy fields in the lowlands initially followed by numerous waterfalls and mountains laden with tea plantations and cloud forests as you ascend towards the highlands. (5 ½ hour drive)

Jetwing Warwick Gardens, Nuwara Eliya

Jetwing Warwick Gardens lies 5782 feet above sea level. It is gifted with all nature's boundaries and is cradled amidst green clad mountains enriched with tea estates that can be witnessed on the narrow and winding road up to the bungalow. This unique Edwardian style bungalow which was once the dwelling of a Scottish tea planter was restored to its original old charm and warmth. The bungalow consists of five well appointed rooms, library, dining hall, open terraces and gardens, with the comfort of every modern convenience alongside the more traditional delights.

Spend 02 nights at Jetwing Warwick Gardens. Accommodation in a Deluxe Room. Your stay is on a Bed & Breakfast basis.



DAY 7

Make a pre-dawn start and travel towards Horton Plains National Park (Approx. 1 ¼ hour's drive). A variety of wildlife including endemic Rhino-horned and Hump-nosed Lizards, highland bird species including the Sri Lanka White-eye, Dull-blue Flycatcher, Sri Lanka Bush Warbler, Yellow-eared Bulbul may be observed. With a bit of luck, the elusive Sri Lanka Whistling Thrush and the Sri Lanka Bush Warbler may also be encountered. Sambar, Sri Lanka's largest species of deer can be seen around the plains close to the entrance of the park. Spend the morning, taking a scenic walk passing through the grasslands and cloud forests to a viewpoint known as World's End after which you can see Baker's Falls.

Afternoon at leisure. Time permitting, visit the nearby Hakgala Gardens to look for the shaggy-coated Bear Monkey (Highland-race of the endemic Purple-faced Leaf Monkey) along with highland endemics such as the Sri Lanka White-eye, Sri Lanka Scimitar Babbler and Dull-blue Flycatcher

Overnight at Jetwing Warwick Gardens. Accommodation in a Deluxe Room. Your stay is on a Bed & Breakfast basis.

DAY 08

After breakfast, leave towards Yala on the south-east corner of the island and check-in at the Cinnamon Wild in the outskirts of Yala National Park. (Approx 5 hour drive)

Cinnamon Wild, Yala:

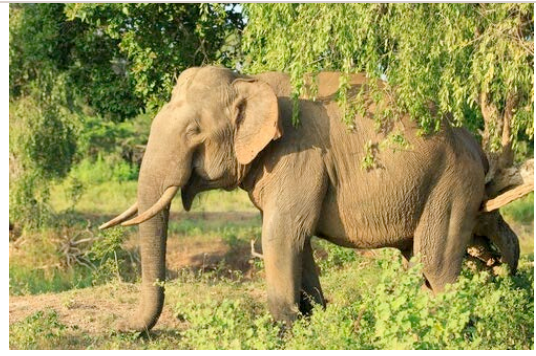
Named as a tribute to the surrounding milieu of the Yala National Park which houses the highest density of leopards in Asia, Cinnamon Wild Yala sits adjacent to the park boundary and could very rightfully be positioned as an extension of the park. A property that was first established in 2002 as an eco-friendly resort for wildlife enthusiasts visiting the Yala National Park, Cinnamon Wild Yala opened its doors after an extensive re-construction and refurbishment as a world-class game lodge, conceptualizing the unique architectural features of the 'Wild' into its rustic exteriors and luxurious interiors.

Late afternoon safari at Yala National Park, where you have the use of a spacious and comfortable 4WD safari vehicle for your game viewing. Leopards are the star attraction here and research has shown that Block I of Yala National Park has the highest concentration of these big cats in the world. Asian Elephant, Sloth Bear, Jackal, Mugger Crocodile, Sambar, Spotted Deer, Asiatic Buffalo, Wildboar, Grey Langur, Toque Macaque and Black-naped Hare are among a variety of larger animals that may be encountered. Yala is also an excellent location for birding with close to 300 recorded species - Indian Peafowl (Peacock) and the Sri Lanka Junglefowl are plentiful; White-bellied Sea Eagles, Crested Serpent Eagles, Grey-headed Fishing Eagle, Changeable Hawk Eagles, Brown Fish Owl and Brahminy Kites are among the most widely seen species of raptors. A dazzling array of waders & water birds (Greater Sand Plover, Painted Storks, Asian Open-bill, Eurasian Spoonbill and the endangered Black-necked Stork) and other dry-zone species including winter migrants (Sirkeer and Blue-faced Malkohas, Malabar-pied Hornbills, Chestnut, Green and Blue-tailed Bee-eaters, Barns Swallow) may also be observed.

Spend 03 nights at Cinnamon Wild, Yala. Accommodation is in a Jungle Chalet. Your stay is on a Half Board basis.



Cinnamon Wild, Yala

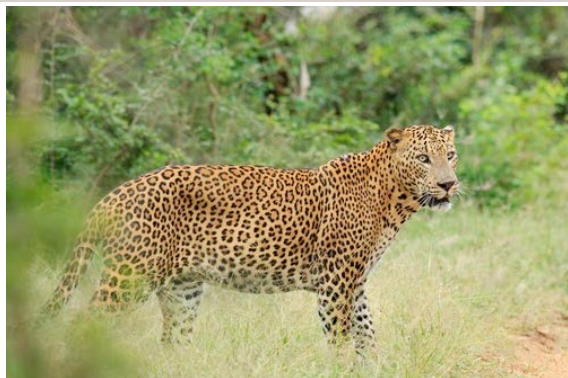


Asian Elephant, Yala National Park

DAYS 09-10

Early morning and late afternoon safaris in Yala National Park in search of Leopard, Asian Elephant, Sloth Bear and a multitude of avian species and other mega fauna. The varied landscapes from lagoons to rocky outcrops among the scrub jungle are a treat to the eye as you seek out the park's wildlife.

Overnight at Cinnamon Wild, Yala. Accommodation is in a Jungle Chalet. Your stay is on a Half Board basis.



Leopard, Yala National Park



Green Bee-eater

DAY 11

Morning, one last game drive at Yala National Park in search of Leopard and other wildlife.

After breakfast, leave for the Uga Residence in Colombo (5 ½ hour drive). Colombo is an open and attractive city with a fascinating mix of 19th and 20th century colonial buildings, and more recent modern architecture. In the last few years, considerable renovation and restoration work has been undertaken in the capital. During your stay in Colombo we suggest driving through and visiting the Galle Face Green, Gangaramaya Temple, Viharamahadevi Park and Independence Square. Time

The Uga Residence, Colombo

Nestled between the trendy Park Street and the lakeside temple of Gangaramaya, one of Colombo's principal Buddhist shrines, the Uga Residence is a unique boutique hotel in the heart of Sri Lanka's capital city. Built in the eighteenth century by Sheikh Salehboy Moosajee, it is one of the few remaining buildings of its kind in Colombo. Originally a family home, the house was designed to host receptions and entertainment on a grand scale, with great halls, expansive gardens and stables for visitors' carriage-horses. Today, the Residence is a luxurious 11 suite city hotel owned and managed by Uga Escapes. Its design is glamorous, contemporary and comfortable, but recalls the rich history of the building and the surrounding area. With a large garden, swimming pool, gym, bar and 'great room', the Residence offers plenty of spaces to meet, relax or celebrate.

Spend 01 night at the Uga Residence, Colombo. Accommodation is in a Park Suite. Your stay is on a Bed & Breakfast basis.



Uga Residence, Colombo



Uga Residence, Colombo

DAY 12

Transfer to Bandaranaike International Airport (Colombo) for your departure flight (1 hour drive). Please be at the airport 3 hours prior to departure of flight.

***** End of Services *****